

# Castle Collection

JOURNEY THROUGH IRELAND,  
WALES, ENGLAND & SCOTLAND

Ballina Mayo | Ballina Manor Hotel

Dublin | The Castle Hotel

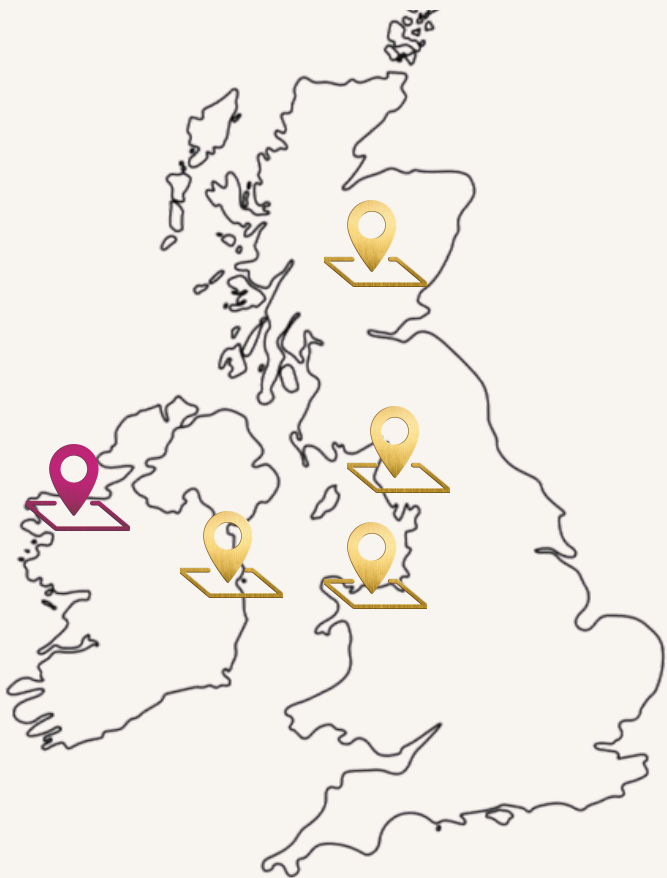
North Wales | The Beaches Hotel

Lake District | Lake District Castle Inn

Pitlochry, Scotland | Atholl Palace Hotel

Pitlochry, Scotland | Fisher's Hotel

Pitlochry, Scotland | Scotland's Spa Hotel



# Ballina Manor Hotel

**BALLINA MAYO | IRELAND**

Riverside Location in Ballina Town

Dining with a View

Ideal for Business and Events

Great Location for Golf Breaks

Onsite Carpark (Limited)

## GET IN TOUCH

Ballina Manor Hotel  
General Manager  
Edel Doherty

[edel.doherty@ballinamanorhotel.ie](mailto:edel.doherty@ballinamanorhotel.ie)>

+353 (0)96 80 900



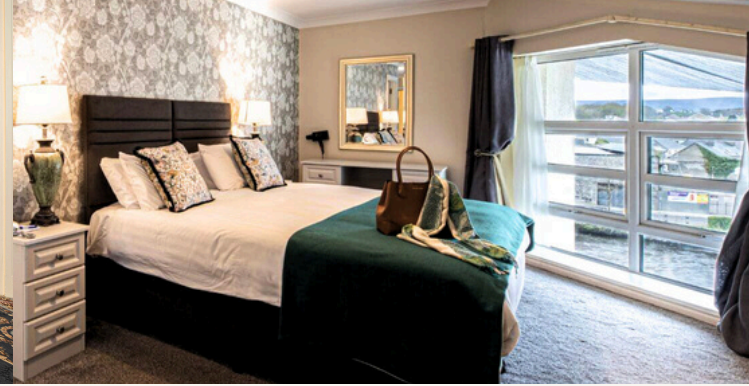
# Ballina Manor Hotel

**BALLINA MAYO | IRELAND**

Ballina Manor Hotel, Barrett Street,  
Carrowcushlaun West, Ballina, Co. Mayo,

F26 HY84, Ireland

[www.ballinamanorhotel.ie](http://www.ballinamanorhotel.ie)



## Ballina Manor Hotel, A Gateway to the Wild Atlantic Way

Overlooking the River Moy in the lively market town of Ballina, the Ballina Manor Hotel combines modern comfort with warm Irish charm. Its central location makes it the perfect base for exploring the Wild Atlantic Way, fishing on the Moy, or teeing off on some of Ireland's top golf courses. Guests can also enjoy the hotel's bar and dining options, featuring locally sourced cuisine in a relaxed, welcoming atmosphere.

### Why Choose Ballina Manor Hotel

- Central riverside location in Ballina, County Mayo
- On the Wild Atlantic Way – perfect base for exploring Ireland's rugged west coast
- Access to world-class golf, salmon fishing, and heritage attraction
- Traditional Irish hospitality with modern comfort

### Stay

Ballina Manor Hotel has 80 inviting rooms with options including Classic Doubles & Twins, Superior Rooms with river views, Family Rooms for groups, and Accessible Rooms.

### Location

- Central riverside location in Ballina
- 40 minutes from Knock Airport
- 9 min walk from Ballina Train Station

### Local Experience

- Golf: Enniscrone Golf Club, Ballina Golf Club, Carne Golf Links, Strandhill Golf Club
- Fishing on the River Moy, one of Europe's premier salmon rivers
- Walking & Exploring: Discover the trails of Belleek Woods, or head for the beaches and cliffs along Mayo's stunning Atlantic coastline

### Dine & Unwind

#### The Ridgepool Restaurant

Savour fresh, locally inspired dishes overlooking the famous Ridge Pool on the River Moy. The menu celebrates Irish flavours, from Atlantic seafood to hearty traditional favourites.

#### The Bar & Lounge

A relaxed space for light bites, a creamy pint of Guinness, or a quiet whiskey by the fire. Popular with both guests and locals, it captures the true spirit of Mayo hospitality.

### Meet & Celebrate

- Meeting and event spaces for up to 200 guests
- Private dining and tailored menus
- Ideal for weddings, family celebrations, and group tours